



HARRINGTON
COMMERCIAL REAL ESTATE SERVICES

FEDERAL RESERVE BANK BUILDING

**502 S. SHARP STREET
BALTIMORE, MD 21201**

502 S. SHARP STREET

BALTIMORE, MD 21201

EXCLUSIVE OPPORTUNITY TO LEASE
SPACE IN ONE OF DOWNTOWN'S MOST
SECURE BUILDINGS

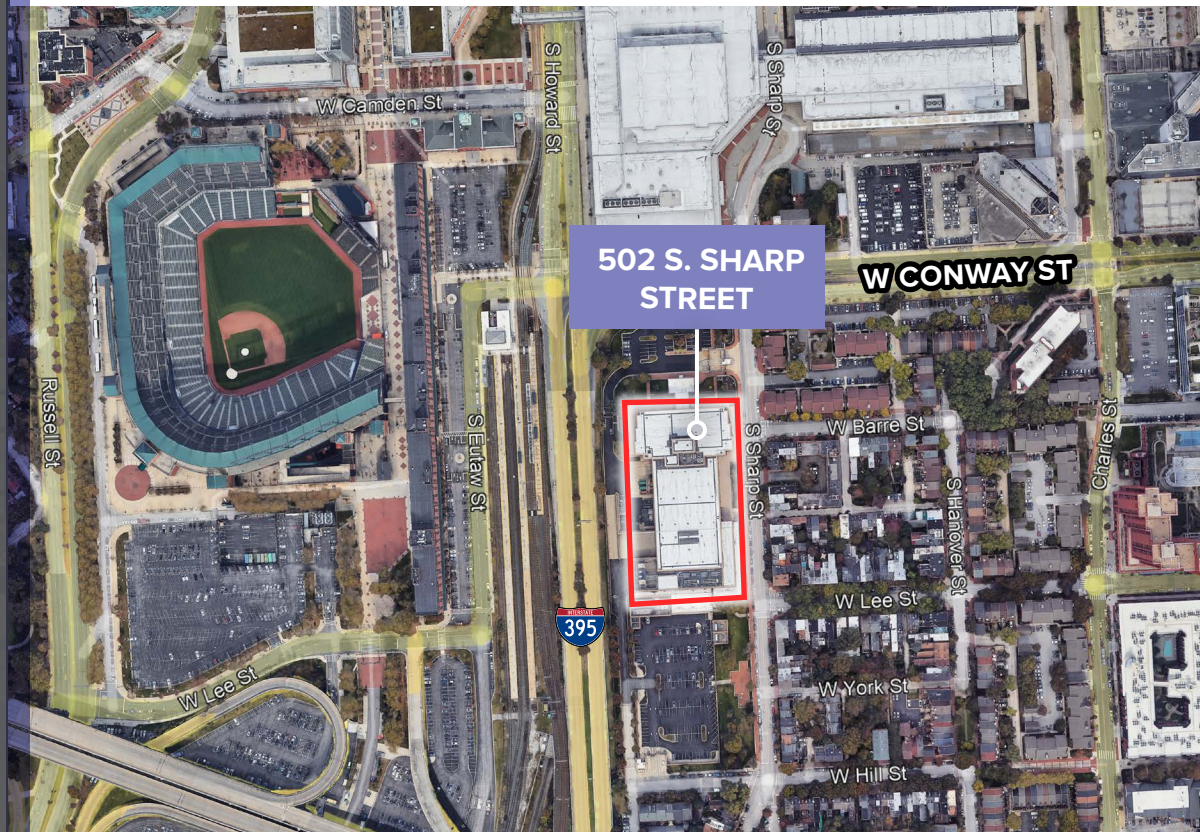
Space Availability:

1ST FLOOR

Suite 101	1,115 SF
Suite 102	973 SF
Suite 103	4,156 SF
Suite 104	2,392 SF

2ND FLOOR

Suite 201	5,583 SF
Suite 202	3,317 SF



Located adjacent to Interstate 395,
with easy access to Interstate 95,
across from Camden Yards and the
Convention Center



Free parking in secure parking lot



Located between Downtown and
Federal Hill

ENJOY THE AMENITIES OF THE FEDERAL RESERVE BANK AT 502 S. SHARP STREET



AMENITIES

- » Updated conference facilities with in-house catering
- » Cafeteria with private/executive dining rooms
- » Outside park with picnic area
- » Fitness Center
- » Limited furniture available
- » Free and abundant on-site parking

Ideal for government, defense, contingency/backup site, telemarketing and service business requiring a secure environment

State-of-the-art security system

SCIF & Tier II capable

Raised flooring for call and data centers

On-site management and maintenance by the Federal Reserve Bank

Back-up generator and cooling systems

NEARBY AMENITIES



83

President St

POWER PLANT
Level

Pratt St

 The Baltimore Convention Center

W Conway St

Light St

 NATIONAL AQUARIUM

 PIER SIX
PAVILION



502 S. SHARP STREET

 BALTIMORE'S
INNER HARBOR

 MARYLAND
SCIENCE CENTER

Key Hwy

 AMERICAN
VISIONARY
ART MUSEUM

MLK Jr Blvd

95

 CROSS STREET
ESTD 1989
FEDERAL HILL
MARKET

95

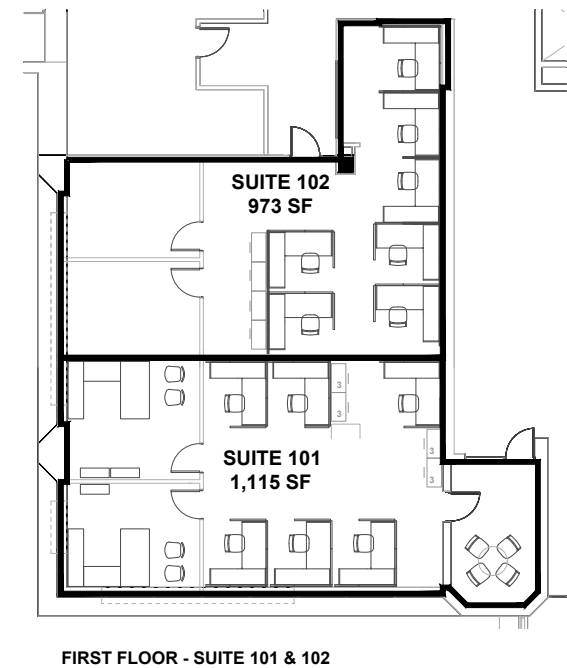
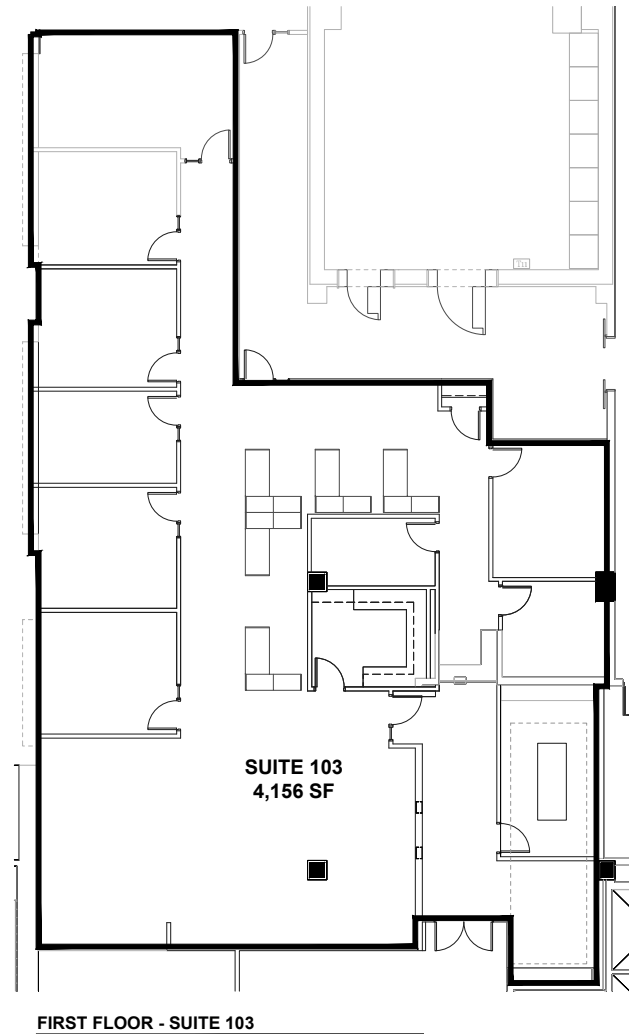
FEDERAL RESERVE BANK BUILDING

502 S. SHARP STREET
BALTIMORE, MD 21201

FIRST FLOOR

TERRI HARRINGTON
Managing Principal

410-302-2443
terri@harringtoncommercial.com



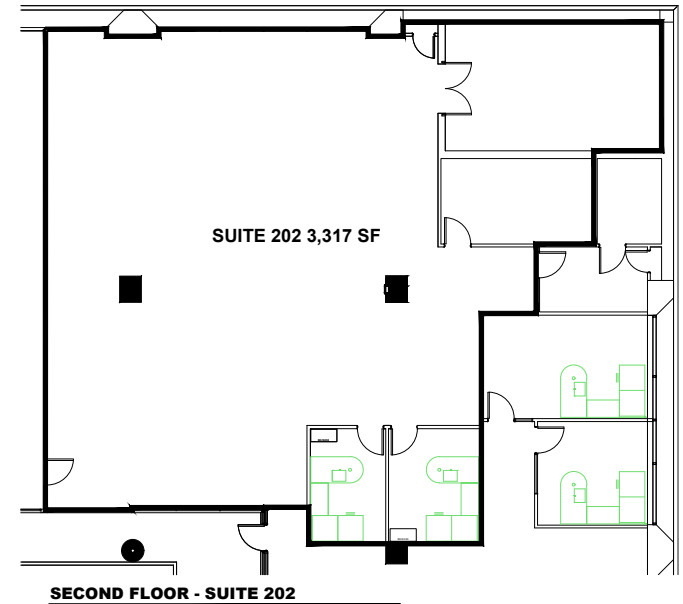
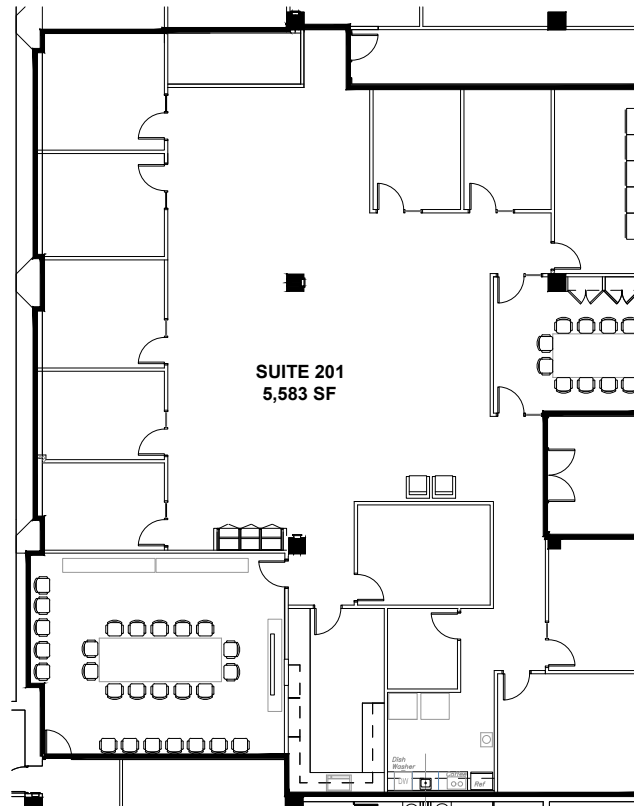
FEDERAL RESERVE BANK BUILDING

502 S. SHARP STREET
BALTIMORE, MD 21201

SECOND FLOOR

TERRI HARRINGTON
Managing Principal

410-302-2443
terri@harringtoncommercial.com



CONTACT INFORMATION

TERRI HARRINGTON

Managing Principal

410-302-2443

terri@harringtoncommercial.com

1200 Steuart Street #817

Baltimore, MD 21230

www.harringtoncommercial.com



HARRINGTON

COMMERCIAL REAL ESTATE SERVICES

